

TSQ

TAMPON PRINTING MACHINES



-  TAMPON PRINTING MACHINES
-   ACCESSORIES
-  ACCESSORIES
-  SERVICE

The "TSQ" series with transverse ink/doctoring cup movement

Perfect for long, narrow work pieces



ORIGINAL

TAMPOPRINT

Tampon printing machines
ALFALAS® Laser Systems
Automations
DMD® Industrial Inkjet Systems

TSQ 130-1 - THE MECHANICAL

The large printing area means that the "TSQ 130-1" has a mechanical drive for all tampon movements, used in combination with a doctoring unit that is driven by a servo motor and for which two different cliché lengths can be set (730/930 mm).

This unique combination makes it possible to print large, long workpieces with a high level of efficiency and sufficient force of pressure.

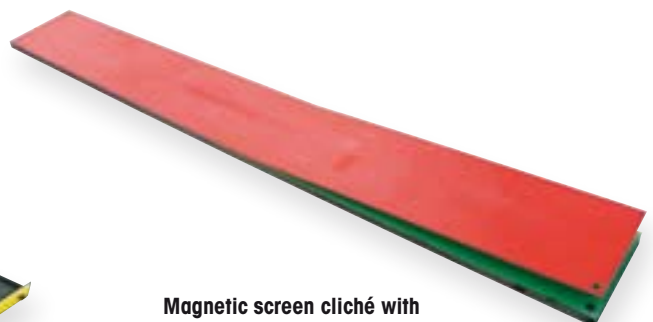
The integrated tampon cleaning system is located directly above the cliché cover.

- Built-in height for tampons 198 mm
- Tampon coupling adjustable in X-Y
- New control – Siemens programmable
- Touch panel
- Ink/doctoring cup with cover
- Setting-up position for ink/doctoring cup change-over (saving of weight – handling)
- Print image – registration adjustment via micrometer
- Print image size – depth 120 mm x length 400 / 520 mm
- Print images up to 600 mm possible by an one-sided stand-by position of the ink/doctoring cup

THE DOCTORING MOVEMENT

While the "transverse doctoring unit" (transverse to the direction of the tampons) that is driven pneumatically or by means of a servo motor (TSQ 130-1 - 800/930) moves over the entire length of the cliché, ink is applied to and removed from the print image.

The open etching is "closed" by the cliché cover either after the print cycle or during a pause in production. This prevents any ink residue in the etching from drying.



Magnetic screen cliché with interleaving paper and magnetic holding plate

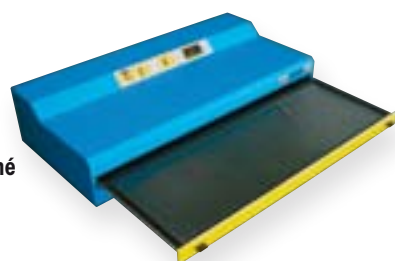


"TSQ 130-1 - 730 / 930"

PORTRAIT

The "TSQ" series was designed especially to deal with long, narrow print images in a single printing operation.

In the past this was only possible with "open" tampon printing machines, but with the "TSQ" series it is now also possible with the tried and tested "hermetic" system.



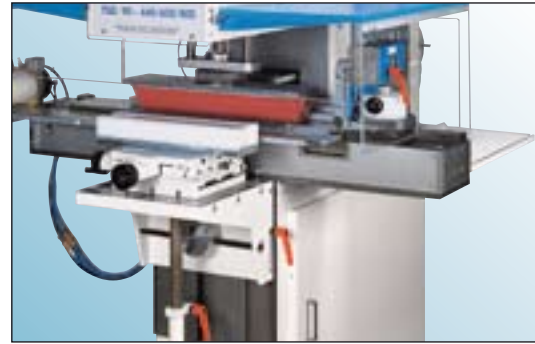
"TSQ flat exposure unit" for DIY production of the magnetic screen cliché



Checking of the ink without dismounting the ink/doctoring cup



Ink/doctoring cup with change-over station



"TSQ 90 - 440 / 600 / 800"

TSQ 60 / TSQ 90 - THE PNEUMATIC ONES

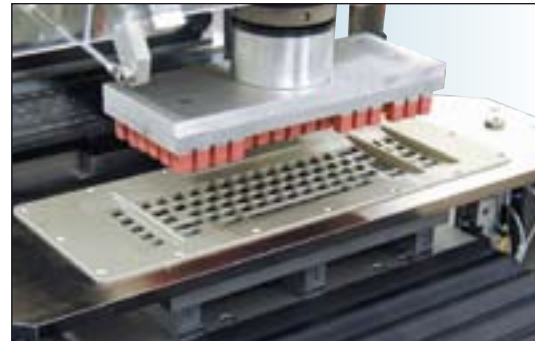
The "TSQ 60" and "TSQ 90" mm have the same basic design, the only difference is the pneumatic drive for tampon movement.

The "TSQ 60" and "TSQ 90" models enable the use of three different cliché lengths. This means that the length of the cliché can be tailored exactly to the type of application.

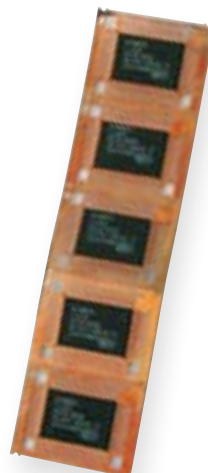
The integrated tampon cleaning system is located between the workpiece and the doctoring unit.



Tampon cleaning systems ("TSQ 60" & "TSQ 90")



Keyboard with mask and special keyboard tampon



TSQ		TSQ 60 Transverse blade 350 / 510 / 710	TSQ 90 Transverse blade 440 / 600 / 800	TSQ 130-1 Transverse blade 730 / 930
Article number		01 03 40	01 03 41	01 03 45
Tampon cleaner		Yes	Yes	Yes
Single cycle		Yes	Yes	Yes
Multiple printing		Yes	Yes	Yes
Continuous run		Yes	Yes	Yes
Piece counter		Yes	Yes	Yes
Speed control infinitely variable		Yes	Yes	Yes
Cycles/hour	max.	200 - 700 / 800	200 - 700 / 800	600 - 1.500
Ink cup/doctoring cup	∅ mm	60	90	130 (option: 140)
Contact pressure infinitely variable		Yes	Yes	Yes
Cliché size	mm	70 x 350 / 510 / 710	100 x 440 / 600 / 800	150 x 730 / 930
Print image diameter max.	∅ mm	50 x 180 / 340 / 540	80 x 180 / 340 / 540	120 (130) x 320 / 520
Tampon stroke onto workpiece	mm	20 - 100	20 - 100	60 - 120
Tampon stroke onto cliché	mm	20 - 100	20 - 100	50 - 95
Tampon installation height	mm	125	125	233
Tampon length	mm	580	550	580
Printing pressure	N	2.500	2.500	6.000
Drive		electro-pneum.	electro-pneum.	electro-pneum. mechanical
Connected load	KW	0,5	0,5	3,5
Power supply	V/phase	230 / 1	230 / 1	400/3/N/PE/50-60 Hz
Interface		-	-	25-polig
Control		SPS	SPS	SPS
Control voltage	V/DC	24	24	24
Pneumatic supply	bar	6	6	6
Air consumption/cycle	NL	18	18	6
Width	mm	1.080	1.080	1.200
Depth	mm	1.110	1.110	1.600
Height	mm	1.550	1.550	1.855
Weight	kg	242	268	960

Scope of supplies:

- Toolkit
- Paper cups / 10 pcs.
- 1 brush
- 1 spray bottle, 500 ml
- 1 assembly table
- 1 pair gripping tongs
- 1 ink/doctoring cup
- 1 thrust collar
- 1 tampon coupling
- Foot switch
- Documentation

Options:

- (TT) bench model TSQ 60, TSQ 90, TSQ 130-1
- x/y cross table
- Ø 140 ink cup/doctoring cup for TSQ 130-1
- Tampon shifting/expansion
- Light curtain

Dealers:



TAMPOPRINT® AG

Lingwiesenstraße 1
70825 Korntal-Münchingen, GERMANY
☎ +49 7150 928-0
Fax: +49 7150 928-400
E-Mail: info@tampoprint.de
"Ventes et Affaires Françaises"
☎ +49 7150 928-144
Fax: +49 7150 928-432
E-Mail: ventes@tampoprint.de
http: www.tampoprint.de

TAMPOPRINT® INTERNATIONAL CORP.

1400 26th Street, Vero Beach, FL 32960, USA
☎ +1 772 778-8896, 800 810-8896
Fax: +1 772 778-8289
E-Mail: sales@tampoprint.com
http: www.tampoprint.com

TAMPOPRINT® IBERIA S.A.U.

c/Caspe 127-135 local B, 08013 Barcelona, SPAIN
☎ +34 93 2327161
Fax: +34 93 2471500
E-Mail: tampoprint@tampoprint.es
http: www.tampoprint.es

ORIGINAL

TAMPOPRINT®

The reproduction of trademarks and brands used in this brochure, even if not explicitly expressed, does not justify the assumption that such names or symbols may be considered as free as defined by the Trademark Act and may therefore freely be used. The rights are the property of the respective owner.

TAMPOPRINT® products are permanently updated to keep pace with the latest technological developments. For this reason, figures and descriptions are non-binding. Manufactured according to EC Directive 98/37/EC.

Subject to alterations! ©Copyright