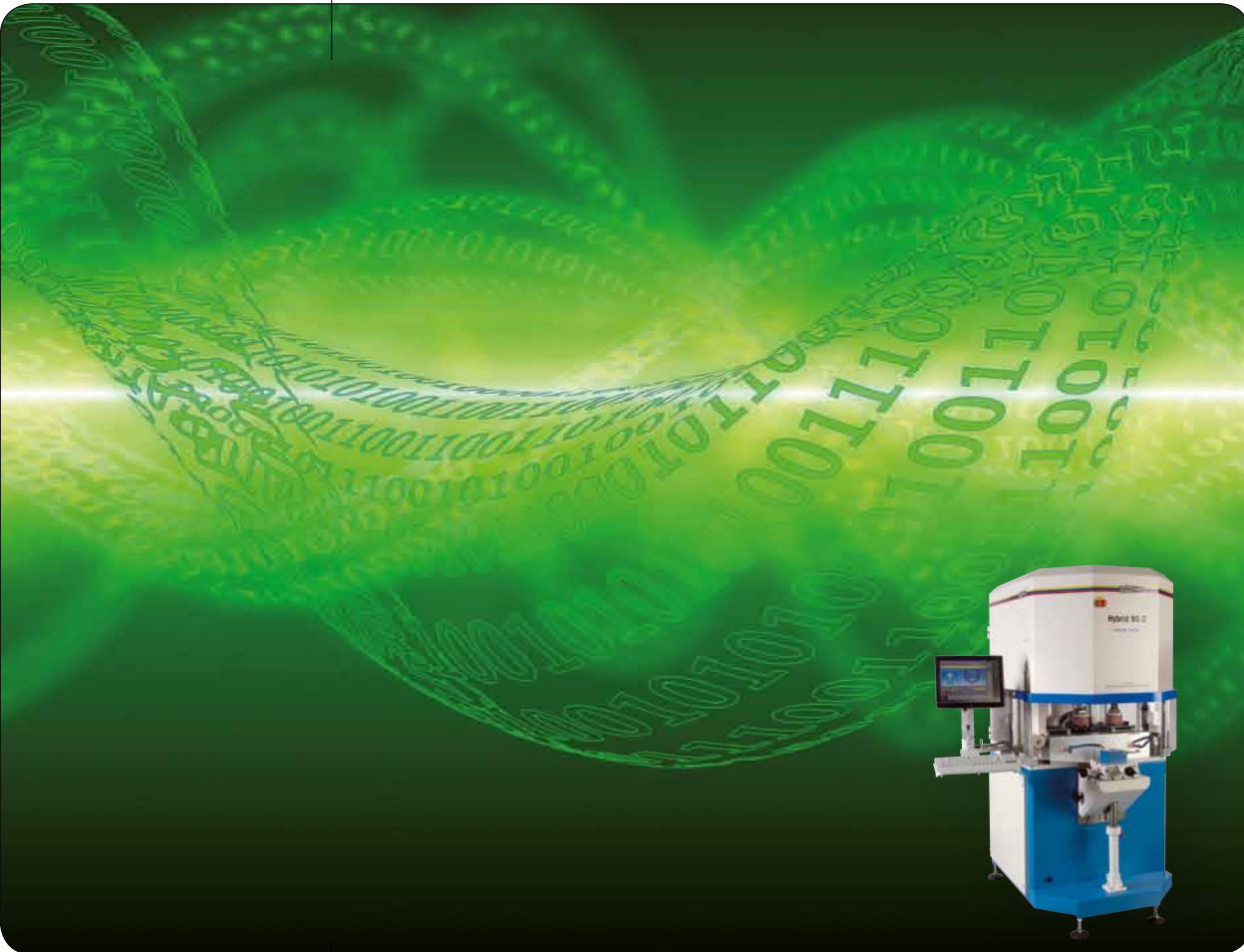






HYBRID

TAMPON PRINTING MACHINES



-  TAMPON PRINTING MACHINES
-  ACCESSORIES
-  ACCESSORIES
-  SERVICE

Standard tampon printing machine for minimum-size series production

Variable, frequently changed data amounts without cliché change

2-colour printing, cliché production integrated

technologies for your future
made in germany

ORIGINAL

TAMPOPRINT®

Tampon printing machines
ALFALAS® Laser Systems
Automations

STANDARD

HYBRID -SERIES

Tampon printing in minimum-size series

Smart machine concept for economical production and clean fingers.

ABB production example:

Minimum amounts: "Approximately 6.000 production orders with lot sizes down to five pieces run through our production".

Hybrid replaces five conventional tampon printing machines

Having around 6.000 of these small orders per year has up to now meant producing film originals 6.000 times, producing clichés and replacing them, adjusting fits, cleaning and outsourcing and storing them. "This meant not only a lot of effort and expense, but also placed strain on the personnel, if only due to the unavoidable dirt produced. Today, the work can basically be carried out in a white shirt", states Marco Kampmann.

He also names a further quality-determining effect: "Errors due to insertion of incorrect clichés - a problem not to be underestimated with so many variants - are excluded here. And thanks to barcode readers and direct connection to the SAP system, incorrect information to the machine controls such as number confusion are no longer possible".

Excerpt from: www.kunststoff-magazin.de, KM August 2010

Reference: ABB Switzerland

Hybrid replaces five conventional machines



WITH THE SPEED OF LIGHT TO THE TARGET



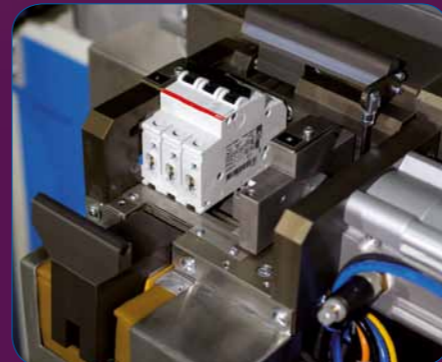
The data set for the printed images belonging to the product is loaded via SAP



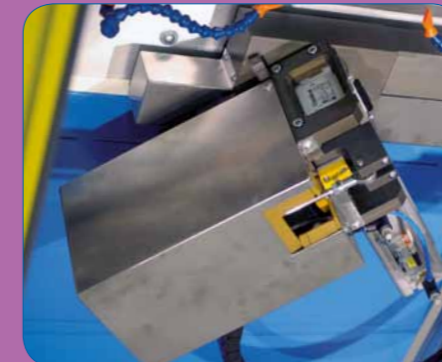
Read-in of the barcode from the order papers on the machine controls



Multi-sided printing of circuit breakers in one working step



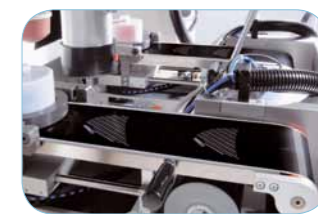
Rotary device autom. positions workpieces for double-sided tampon printing process.



Detail view: rotary device



Stewable printing unit



Integrated laser unit for production of printing clichés

Integrated cliché production

using laser engraving. The future in the tampon printing process.

The tampon printing machine "HYBRID 90-2" combines the concept of the "hermetic" tampon printing with the flexibility of the digital data for cliché production. Thanks to the software "TP_alfa" which was specifically developed for this purpose, the cliché production takes place in the "Hybrid 90-2". Automatic changeover of print motifs takes place in a matter of seconds. A multi-colour print motif will be directly produced with precise register setting.

The "HYBRID 90-2" is based on the well-tried "V-DUO" principle with an ink/doctoring cup size Ø 90 mm.

Our in-house developed "microflex" cliché band played an important role to make this concept possible. It has a high engraving quality and mechanical stability.

Comparison

Hybrid Cliché production by means of laser engraving	Production of Magnet-screen clichés
1 Prepress	1 Prepress
2 Setup laser software	2 Creation of film
3 Cliché engraving	3 Mounting of film
4 Printing	4 Exposure
-	5 Washing out
-	6 Curing
-	7 Mounting of cliché
-	8 Adjusting of register
-	9 Printing

Hybrid	HYBRID 90-2	
Parts no.	*01 00 95	
Ink residue pick-up system	integrated	
Single cycle	yes	
Multiple printing	yes	
Continuous run	yes	
Piece counter	yes	
Variable speed control	yes	
Cycles/hour	max.	1.200
Ink cup/doctoring cup	∅ mm	2 x 90
Variable doctoring contact pressure	yes	
Cliché band "microflex"	mm	L 28.000 x B 120
Print image size max.	∅ mm	85
Variable tampon stroke onto workpiece	mm	10 - 160
Variable tampon stroke onto cliché	mm	10 - 70
Tampon installation height max.	mm	95
Force of pressure	N	1.170
Drive	electropneumatic	
Connected load	kW	1,2
Power supply	V/phase	230V/1/N/PE
Interface	D-SUB 37-pole	
Power frequency	Hz	50-60
Control	PLC	
Control voltage	V/DC	24
Prefuse	A	16
Pneumatic supply fine filter 5 µm	bar	6
Air consumption	NL	8
Width	mm	1.034
Depth	mm	1.215 / **1.755
Height	mm	TT 1.085 / *TS 1.925
Weight	approx. kg	TT 420 / *TS 530

*= Floor standing model, **= Required space for pulled-out printing unit

Scope of supply

- toolkit
- paper cups / 10 pcs.
- 2 brushes
- spray bottle 500 ml
- 2 ink/doctoring cups
- 1 ink cup holder
- 2 thrust collars
- 2 tampon couplings
- 2 tampons, 6 Shore-A, silicone material 03
- 1 tampon cleaning

Accessories & Options

- Rotary index table
- Light curtain
- x-y cross support
- 2-colour ink/doctoring cups
- Workpiece sliding unit
- Control extension (also an interface to the external feeding of cliché data)
- Bench model
- Control extension, e.g. Ethernet connection
- Beam source at choice (cliché production)

Dealer:



The reproduction of trademarks and brands used in this brochure, even if not explicitly expressed, does not justify the assumption that such names or symbols may be considered as free as defined by the Trademark Act and may therefore freely be used. The rights are the property of the respective owner.

TAMPOPRINT® products are permanently updated to keep pace with the latest technological developments. For this reason, figures and descriptions are non-binding. Our machines are manufactured based on the currently valid European Machinery Directives as well as the European product standards EN 1010 - 1 and EN 1010 - 2.

Subject to alterations! ©Copyright

Cliché engraving	with integrated laser source "SK 60"
Laser source	Pulsed Yb:YAG fiber laser , 1064 nm, air-cooled
Frequency	20-80 kHz
Output power	5 W / CW
Ambient temperature	+5°C up to +35°C, relative air humidity < 85%
Deflection unit	Galvo head, standard with aperture ∅ 7 mm
Optics	Focal length f-160 mm
Marking area approx.	120 mm x 120 mm
Software	graphical, Windows® oriented user interface, no editor, i.e. toolbar and context menu, incl. barcode module, code 39, 2 from 5 IL, 128 A-B-C, DataMatrix, standard data import: ai, .plt, Vektor format, variable text elements, i.e. date and time, series no., external texts, integrated database logging, option: external control via TCP/IP protocol or RS 232. Language version: Unicode compatible, German, English, French, Spanish, Portuguese, Italian, Turkish, Japanese, Chinese

Supply unit

19" component design with coded plug-in connection, front-end PC, WIN XP, 17" TFT screen and keyboard, standard interface 8-Bit selection 24 V



TAMPOPRINT® AG

Lingwiesenstraße 1
70825 Korntal-Münchingen, GERMANY
☎ +49 7150 928-0
Fax: +49 7150 928-400
E-Mail: info@tampoprint.de
"Ventes et Affaires Françaises"
☎ +49 7150 928-144
Fax: +49 7150 928-432
E-Mail: ventes@tampoprint.de
http: www.tampoprint.de

TAMPOPRINT® INTERNATIONAL CORP.

1400 26th Street, Vero Beach, FL 32960, USA
☎ +1 772 778-8896, 800 810-8896
Fax: +1 772 778-8289
E-Mail: sales@tampoprint.com
http: www.tampoprint.com

TAMPOPRINT® IBERIA S.A.U.

c/Caspe 127-135 local B, 08013 Barcelona, SPAIN
☎ +34 93 2327161
Fax: +34 93 2471500
E-Mail: tampoprint@tampoprint.es
http: www.tampoprint.es